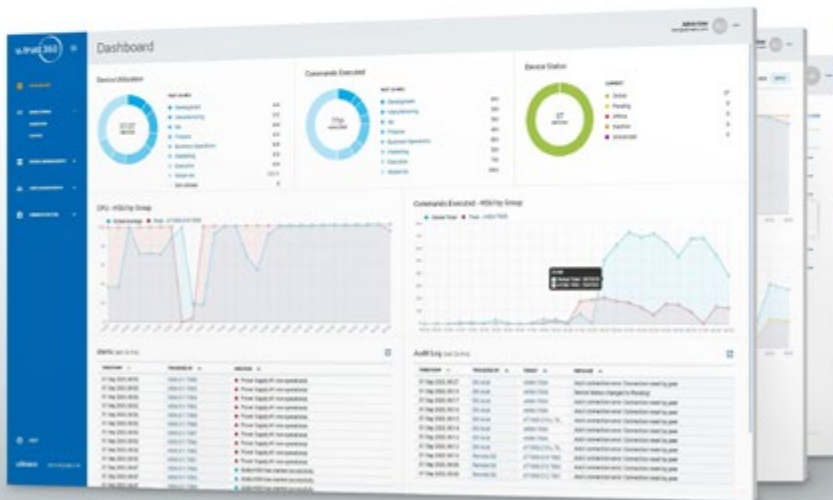


Centralized, Remote Monitoring and Management



A fully functional 30 day trial version is available at support.hsm.utimaco.com

Product Platform



UTIMACO
Atalla AT1000

Monitoring System



UTIMACO
u.trust 360

Centrally manage and monitor your Atalla HSMs.

With the UTIMACO u.trust 360 administration platform you can **remotely access your Atalla HSMs for real-time monitoring, configuration or reporting purposes** on premises or in the cloud.



UTIMACO u.trust 360 is a unified platform that enables centralized administration, monitoring and provisioning of multiple Atalla AT1000 HSM appliances. It provides an easy-to-use GUI with natural event and decision flow to manage cryptographic resources more effectively.

This single pane of glass ensures consistent security policy enforcement, provides transparency, and maintains the health of the HSM infrastructure. Leveraging real-time status updates, compliance reporting and centralized alerts, HSM administrators can easily address capacity, network and compliance issues in a seamless, timely manner.

The HSM no longer needs to be a black box!



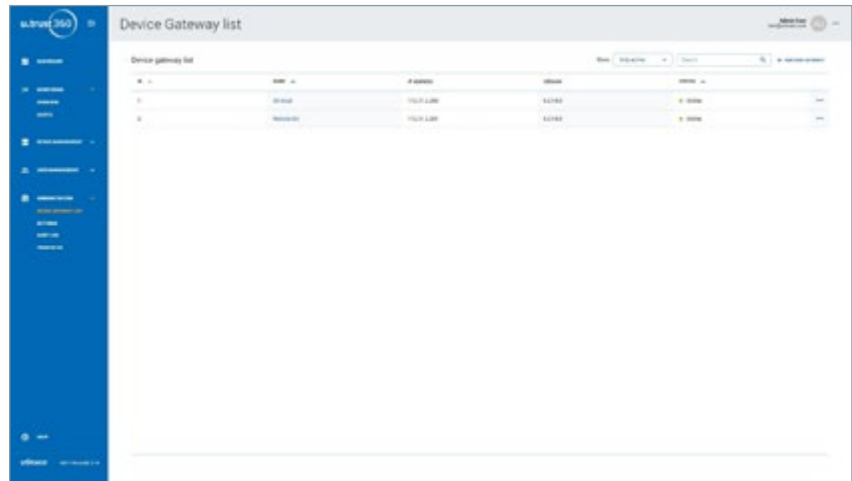
Centralized Management Platform

- Single pane of glass management and monitoring platform
- All in one dashboard
- Customizable monitoring views
- User and Device level RBAC support
- Modular and scalable deployment architecture using hub and spoke model
- Supports hundreds of AT1000 HSMs
- Ease of use for supportability and maintainability

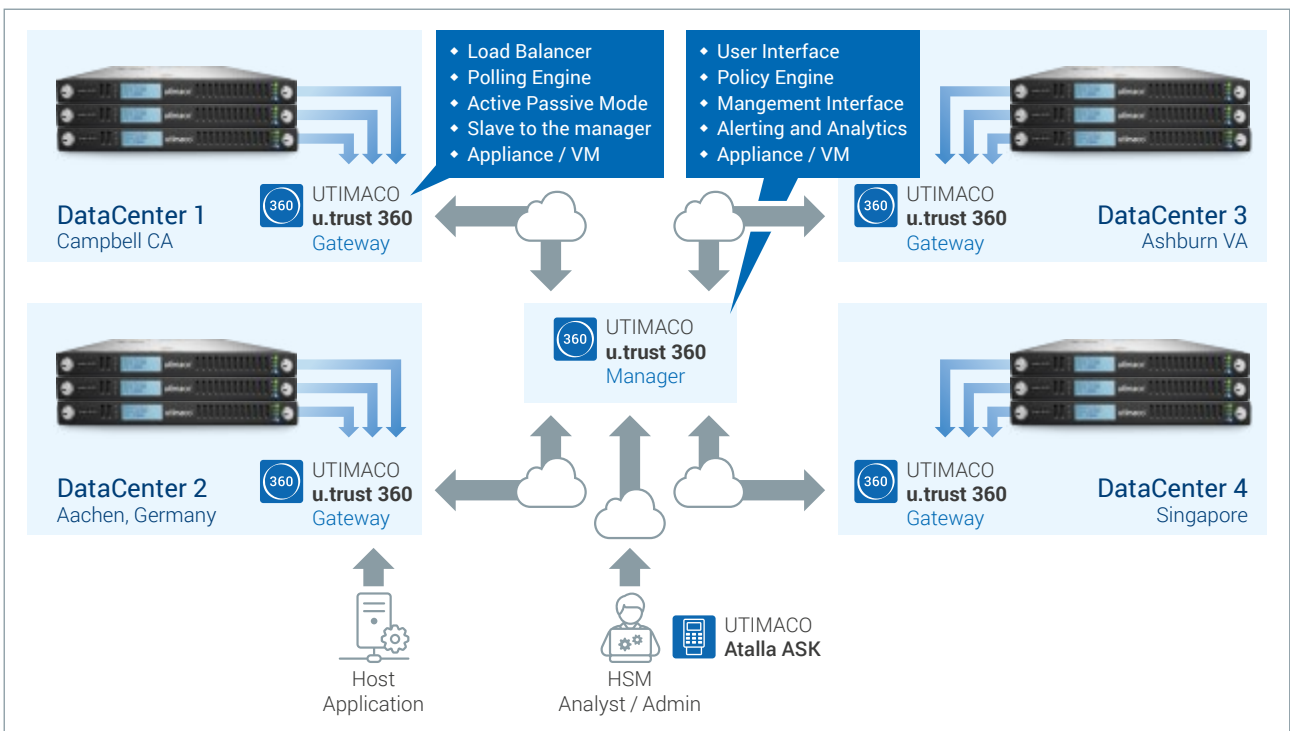
Log Management and Audit Reporting

- Real-time device alert and status
- Customized HSM compliance and consolidated system log reporting
- Email notifications
- Integration with SMTP, LDAP/AD, and SNMP
- Centralized audit logs

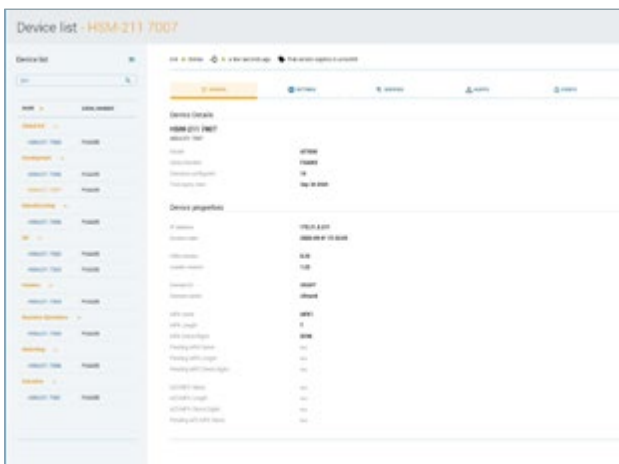
Centrally monitor all your HSMs using a hub and spoke model across multiple datacenters, network segments and locations.



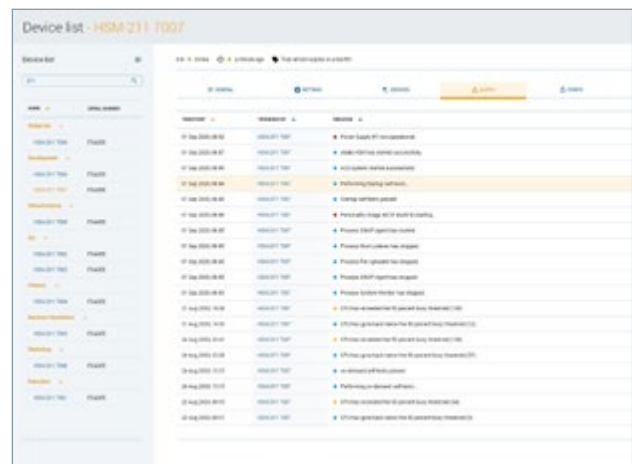
u.trust 360 Device Gateway



u.trust 360 Deployment Model: Hub and Spokes



u.trust 360 Device Management



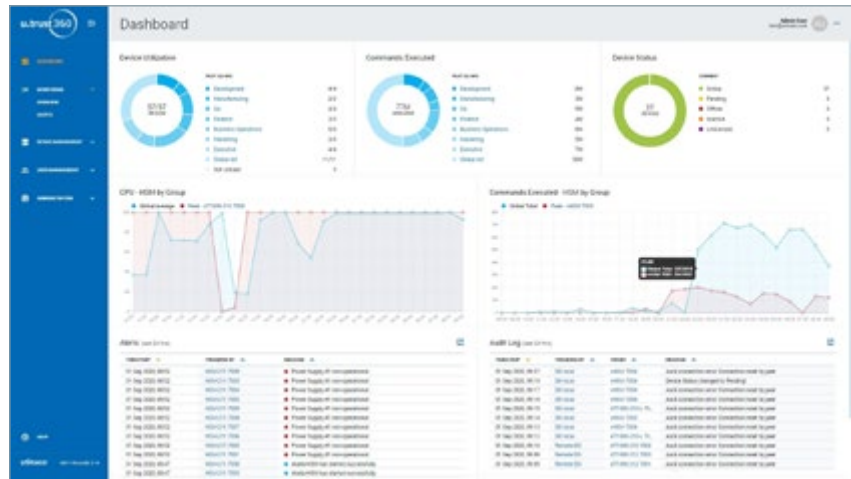
u.trust 360 Proactive monitoring support

A Single Pane of Glass into Your Existing HSM Estate

Automated and robust, the u.trust 360 dashboard is your HSM command center!

Providing full visibility into your HSM real estate, it optimizes operations, increases uptime, and improves security. Its compliance reporting capabilities include real-time status and alerts at the macro and micro levels required within an enterprise.

Simply request details on an individual partition (domain) within an HSM or view the entire estate according to your needs on a centralized dashboard.



u.trust 360 Dashboard

By investing in a cohesive, centrally-managed platform, IT and security teams can become more nimble, adapting to changing requirements and challenges. New services can be rolled out quickly and effectively, and data is free to move throughout the enterprise to support business objectives, without compromising security.

Flexible, Modular, and Extensible Deployment Architecture

Provision and de-provision cryptographic resources for HSMs, automate HSM monitoring using RESTful API capabilities and implement a Role Based Access Control Model (RBAC). Multiple stakeholders take part in managing an organization's security. Control of the cryptographic keys is implemented so that HSM Administrators, key custodians, and Security Officers can perform their duties without involving the Application Owners and impacting the application processing, resulting in 100% uptime.

• Seamless integration

Easily integrates with your existing AT1000 HSM estate. No additional HSM functionality is required.

• Enhanced performance

Uses the utility commands without any impact on the performance of the HSM.

• Identify Performance Bottlenecks

Proactively plan for HSM capacity, as well as avoid any system or network issues.

• Easy Expansion

Monitor and manage 100s of HSMs. Allows logical grouping of multiple HSMs. Scalable architecture to seamlessly expand as your HSM estate grows. One platform to manage and monitor them all.

• Remote Access through True Remote Management

Works seamlessly with your Secure Configuration Assistant (SCA-3 and SCA-W) devices. Eliminates the need to physically visit the data

center and perform tedious front-panel tasks to record every serial number and software version.

• HPE Integrity NonStop System Support

For the first time, you are now able to get a view of the HSMs connected to your HPE Integrity NonStop systems. It uses ASRM (Atalla Secure Resource Manager) running on the NonStop system to establish a connection with HSMs.

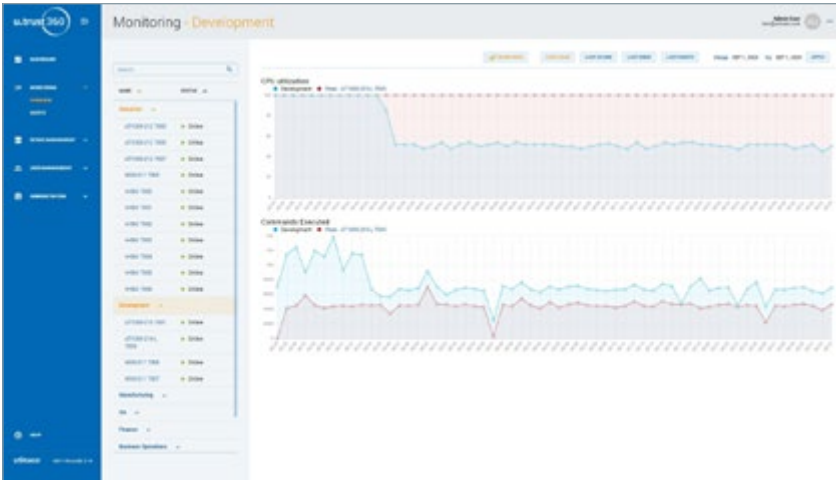
Automated Monitoring and Reporting

Secure, automated, and unified logging and reporting are essential in maintaining requisite risk and compliance posture. All u.trust 360 application and configuration changes are recorded and tracked using an authentic and trusted audit trail in the platform.

- Around-the-Clock Updates**
 Alerts are captured and notified to users with configurable settings using your desired SMTP service.
- System Audit Logs**
 Improved security and compliance with detailed Audit logs and application insights.
- Role-Based Access**
 Deliver different feature sets to different Monitoring User or Administrator personas. Users can be defined locally or imported using LDAP.
- Out-of-Band Monitoring**
 Enable event logs without having to worry about any adverse performance effects on your transaction processing traffic.
- Reporting**
 View, save and print reports, based on pre-defined compliance templates.
- Transaction Monitoring**
 Monitor and find HSM bottlenecks by monitoring out-of-box functionalities or customize to your security policy.

HSM Performance Dashboard

Monitor HSMs at a group level or find the busiest HSM with a simplified HSM level utilization chart.



HSM CPU Utilization

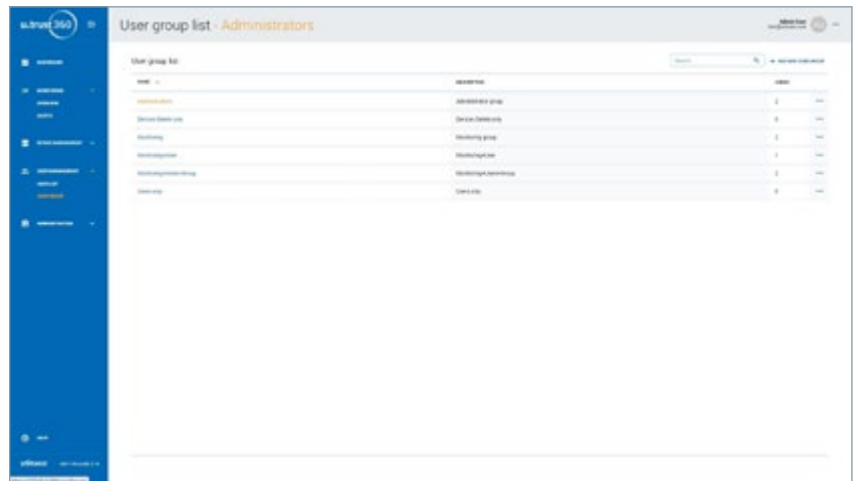
Compliance Reporting

Easy reporting template.



Role Based Access Control Model

Customized user groups to implement granular controls to the managed HSMs. Import users from LDAP store or manage locally.



u.trust 360 User Management

UTIMACO Atalla HSMs – Innovation in Payments

UTIMACO’s Payment Product Portfolio at a glance

Secure your payment data using a root of trust and centrally manage your keys, on premise or in the cloud.

 <p>UTIMACO Atalla AT1000 PCI HSM for Acquiring and Processing Card Transactions The fastest and most compliant HSM in the industry: up to 10,000 TPS from a single HSM!</p>	 <p>ATM/POS Networks PIN Translation PIN Verification Remote Key Loading</p>	 <p>E-Wallets, Online and Mobile Payments</p>  <p>Transaction Processing Credit, Debit/ATM cards, Acquirer, Issuer, Merchants</p>
 <p>UTIMACO u.trust 360</p>	 <p>HSM Monitoring and Management</p>	
 <p>UTIMACO u.trust Cloud</p>	 <p>HSMaaS</p>	
 <p>UTIMACO KeyBRIDGE 4100 Turnkey solution for payment related crypto operations</p>	 <p>Key Lifecycle Management</p>	 <p>Key Injection: POS / POI</p>
 <p>GEOBRIDGE KEES™</p>	 <p>Key Escrow Exchange Service</p>	
 <p>Key Migration and Management</p>	 <p>Secure Tokenization</p>	

Don't Delay Migrating to UTIMACO AT1000

Avoid Business Disruptions and Downtime



Access seamless, real-time performance upgrades while remaining **completely ONLINE**. Software updates are now **10 times faster** than legacy Atalla HSMs.

Improve Operational Efficiency and Productivity



Leverage **scalable licensing** to add the performance capacity you need, when you need it!

Cut Operational and Hardware Costs



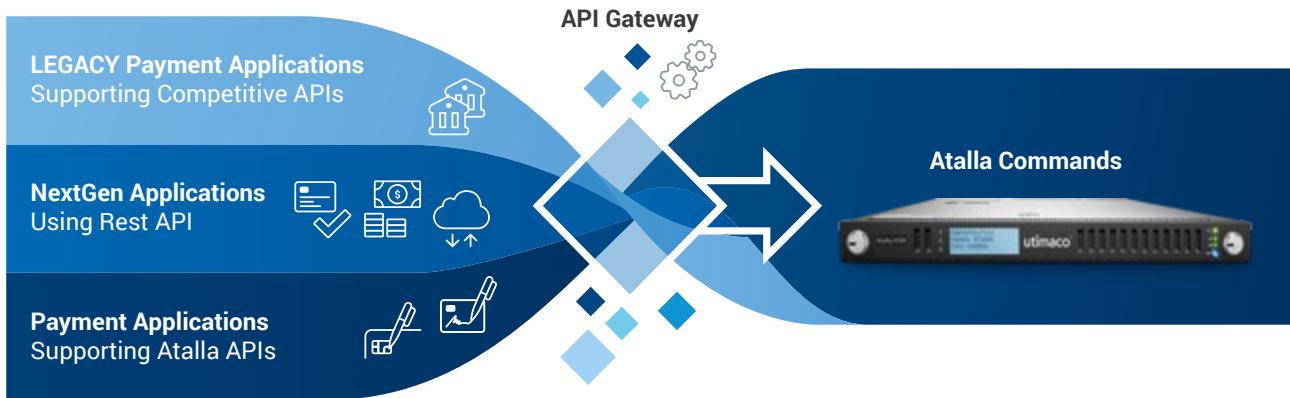
Take advantage of industry-leading performance and superior partitioning capabilities to **support multiple applications**.

Begin to Transition to the Cloud



Harness the possibilities of u.trust cloud-based infrastructure to move your HSM workloads to the cloud and leverage **REST API's to facilitate application integration**.

More APIs – More Use Cases



- Gain the flexibility to support **three different APIs at domain level**
- **Migrate legacy HSMs** to the next generation Atalla on premise and cloud HSMs
- Standardize a set of request methods to communicate with the HSM via our **REST API**
- **Create multi-domains** within the same HSM to support varied applications and different APIs

u.trust 360 Platform Offered On-Prem, Virtually and In the Cloud



- **u.trust 360 appliance**

Easy to drop into your network. Simply configure network options and ready to use!

- **u.trust 360 software**

u.trust 360 grows with your business. You are no longer tied exclusively to hardware; UTIMACO provides you an alternate virtual appliance

architecture that can be installed on your choice of hypervisor, powered by Docker containers.

- **Cloud-Ready**

Provide a centralized monitoring service to your internal customers! u.trust 360 is ready for monitoring multiple HSMs and domains.

Save Time and Reduce Costs with a UTIMACO Hosted PoC and Drive the Product Roadmap

UTIMACO provides remote access to a test system as part of our evaluation program. This is the quickest and easiest way to get a look and feel of the UI and feature set, without the need to setup and dedicate internal systems. A fully functional 30 day trial version is also available at support.hsm.utimaco.com

Please write to us at hsm@utimaco.com.



Get a fully functional 30 day trial!

About UTIMACO

UTIMACO is an international provider of IT security solutions with headquarters in Aachen (Germany) and Campbell, CA (USA). UTIMACO develops hardware security modules and compliance solutions for telecommunication providers in the field of regulation. UTIMACO is one of the world's leading manufacturers in both of these market segments.

Over 260 employees have committed to the company's goal to protect people, ideas and data. Customers and partners value the reliability and long-term investment security of UTIMACO's high-security products and solutions. UTIMACO stands for recognized product quality, user-friendly software, excellent support and products that effectively meet market requirements.



Headquarters Aachen, Germany



Headquarters Campbell, USA

Get in Touch



EMEA

UTIMACO IS GmbH

📍 Germanusstrasse 4
52080 Aachen,
Germany

☎ +49 241 1696 200

✉ hsm@utimaco.com

Americas

UTIMACO Inc.

📍 900 E Hamilton Ave., Suite 400
Campbell, CA 95008,
USA

☎ +1 844 UTIMACO

✉ hsm@utimaco.com

APAC

UTIMACO IS Pte Limited

📍 50 Raffles Place,
Level 19, Singapore Land Tower,
Singapore 048623

☎ +65 6631 2758

✉ hsm@utimaco.com

For more information about UTIMACO® HSM products, please visit:

hsm.utimaco.com

© UTIMACO IS GmbH 10/20 – Version 1.0

UTIMACO® is a trademark of UTIMACO GmbH. All other named Trademarks are Trademarks of the particular copyright holder. All rights reserved. Specifications are subject to change without notice.

Creating Trust in
the Digital Society

utimaco®